



STEVEN TSE

PERSONAL REAL ESTATE CORPORATION

604-614-5903

steventse@macrealty.com

www.steventse.com

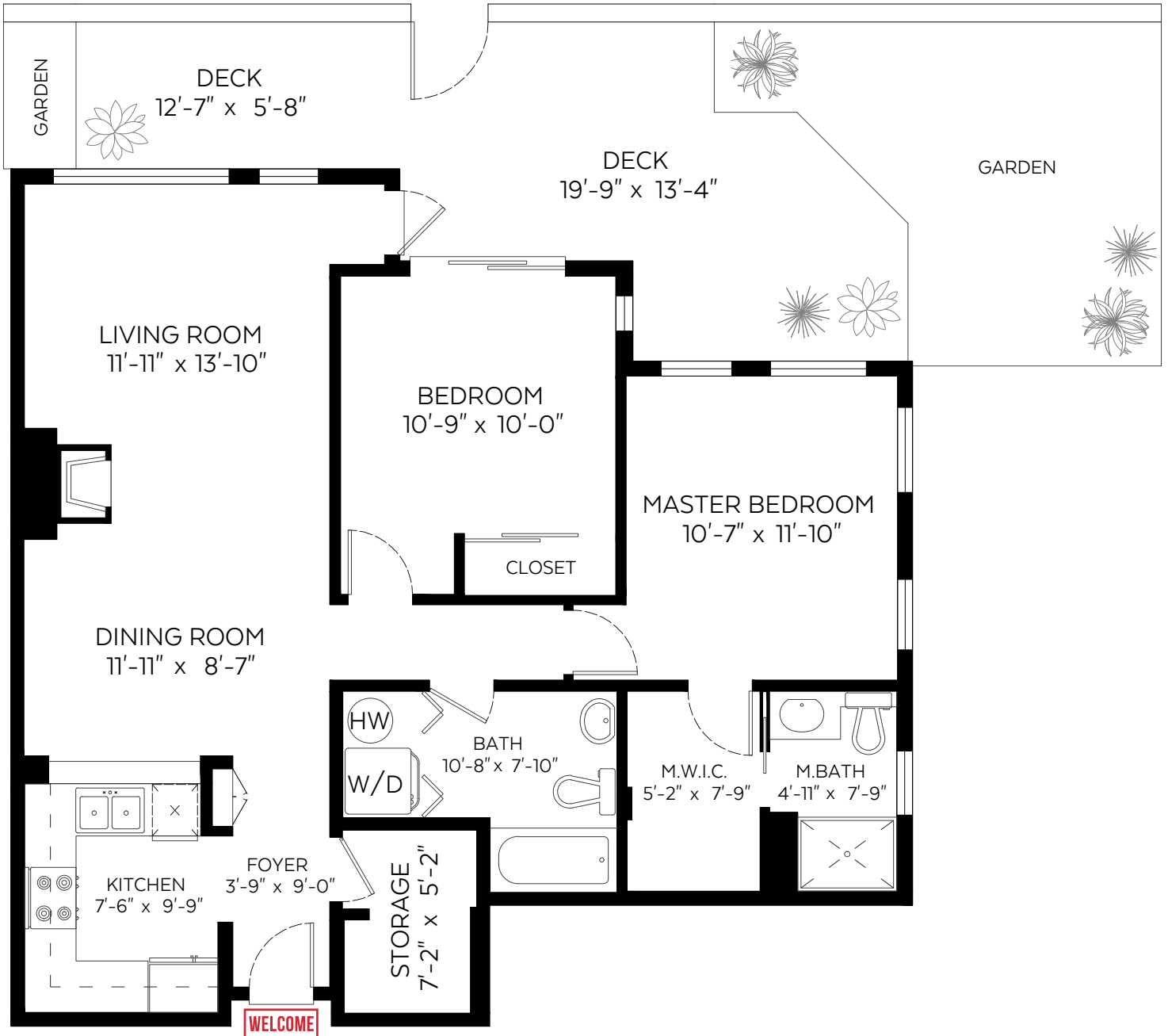
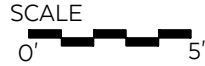
#106-2815 Yew Street,
Vancouver, B.C.

Main Floor: 973 sq.ft.

Ceiling Height: 8'-0"

Auxiliary Area

Deck: 261 sq.ft.



Measured on: Feb. 20, 2019

The floor plan is not suitable for architectural/construction and is covered under E&O. © Excelsior Measuring Inc. 2019. All rights reserved for Excelsior Measuring Inc. Users shall not publish and distribute such material (in whole or in part) and/or incorporate it in other works in any form.



Booked on
the Pixilink App™

