

3531 Marshall St

Vancouver, BC

Total : **1667 SQ.FT.**

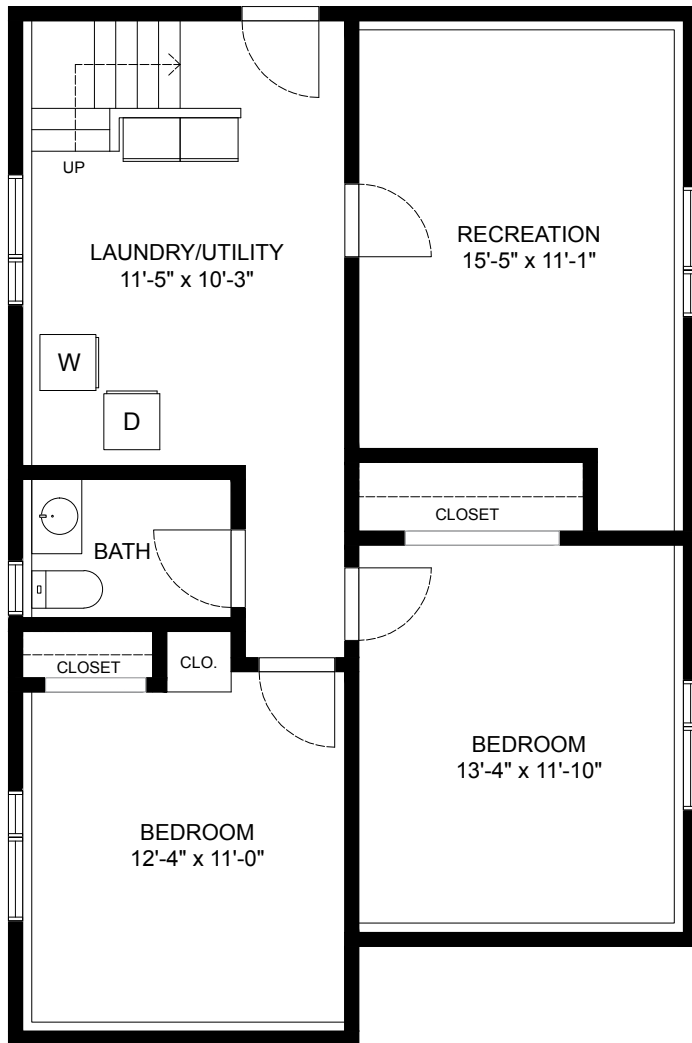
Upper Level: 842 SQ.FT.

Lower Level: 825 SQ.FT.

Balcony: 125 SQ.FT.

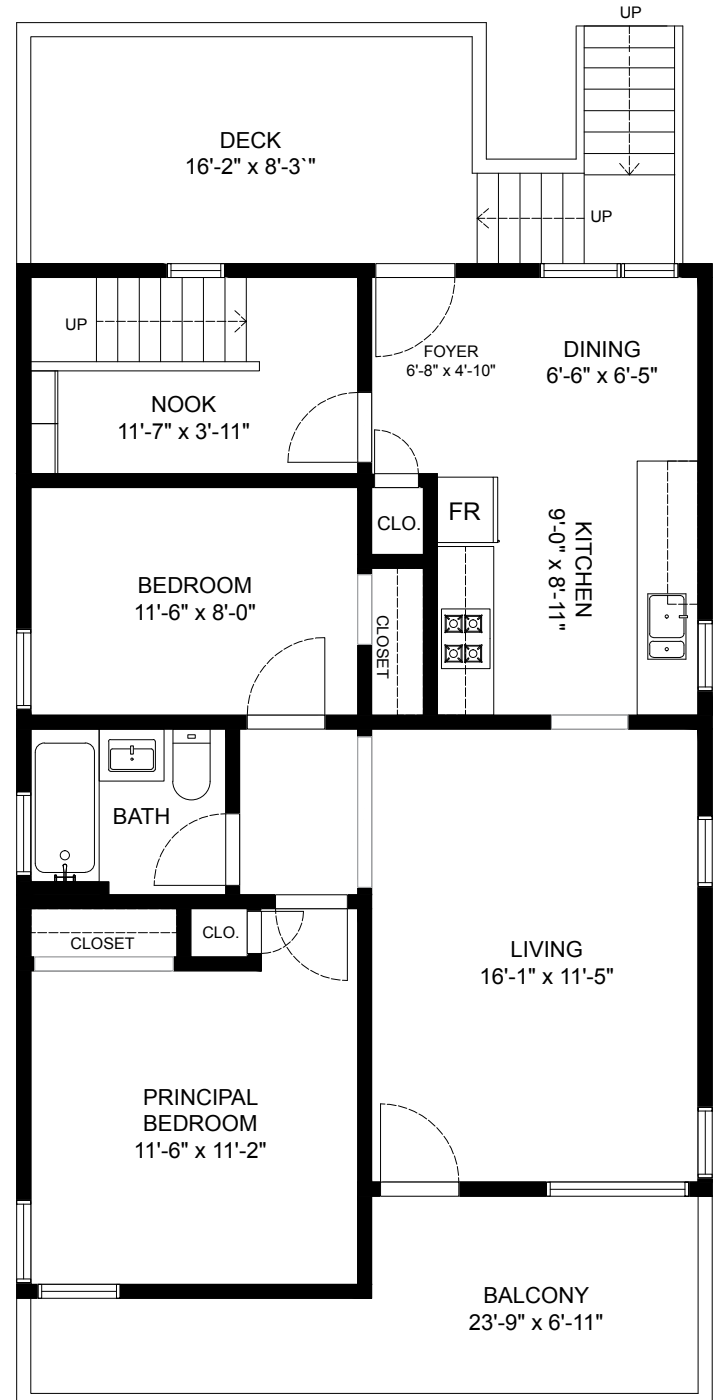
Deck: 134 SQ.FT.

Total Extras: **259 SQ.FT.**



LOWER LEVEL
825 SQ.FT

Ceiling Height - 7'-6"



UPPER LEVEL
842 SQ.FT

Ceiling Height - 8'-0"

TOTAL - 1667 Sq.ft.



NORTH