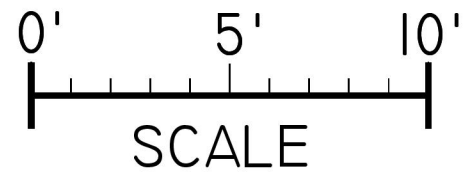
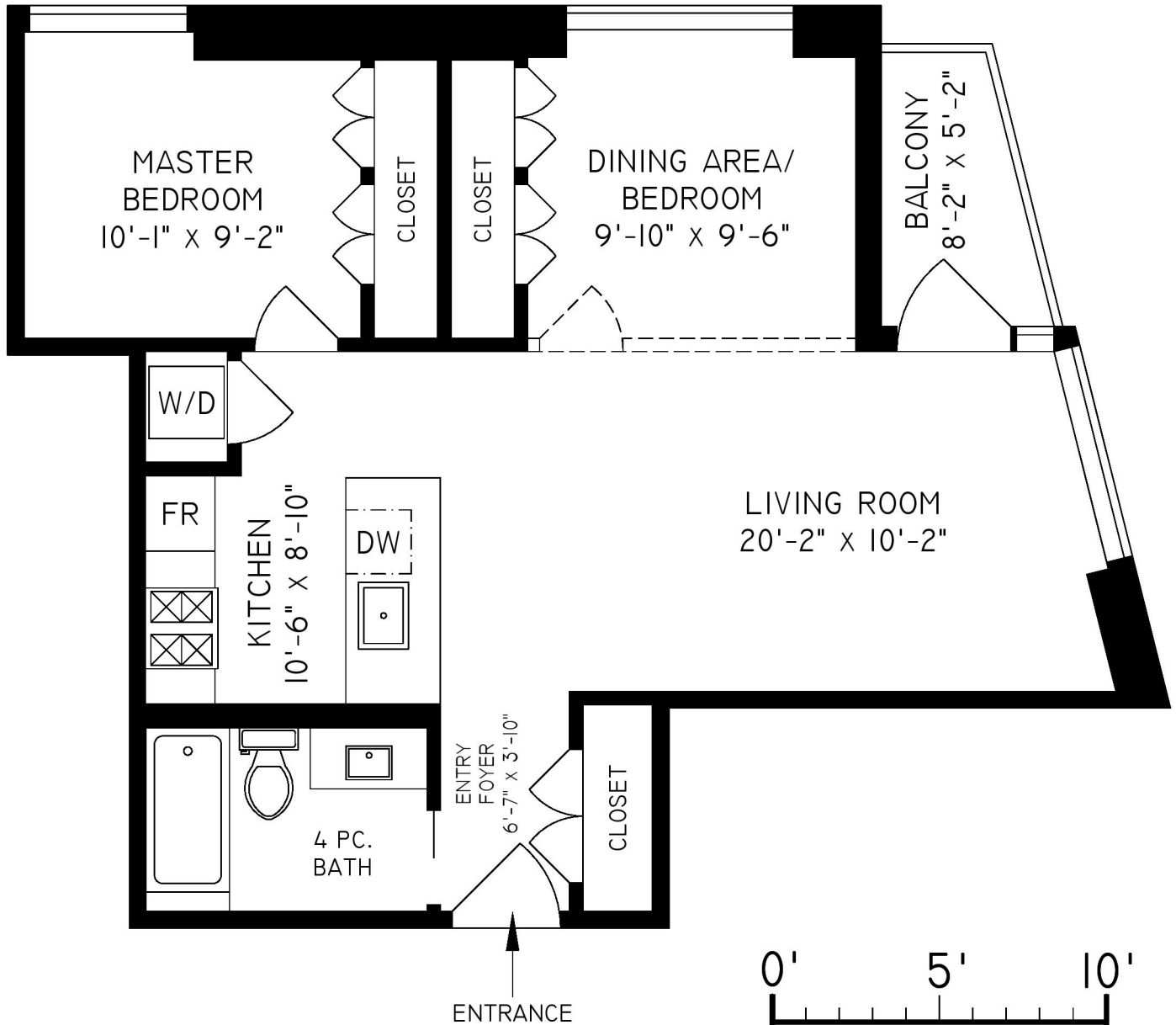




**#419 - 311 EAST 6th AVENUE**  
**VANCOUVER**  
**685 SQ. FT.**  
8'-0" CEILING HEIGHT



FLOOR	AREA (SQ. FT.)	
	FINISHED	BALCONY
<b>FOURTH</b>	<b>685</b>	<b>37</b>

THE REPRESENTED FLOOR PLANS ARE NOT SUITABLE FOR CONSTRUCTION/ARCHITECTURAL PURPOSES.  
EVERY EFFORT HAS BEEN MADE TO REPRESENT ALL DIMENSION ACCURATELY. E&O INSURED.  
FINAL SQUARE FOOTAGE MAY BE OBTAINED FROM STRATA PLAN.