

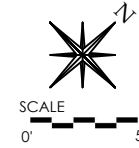
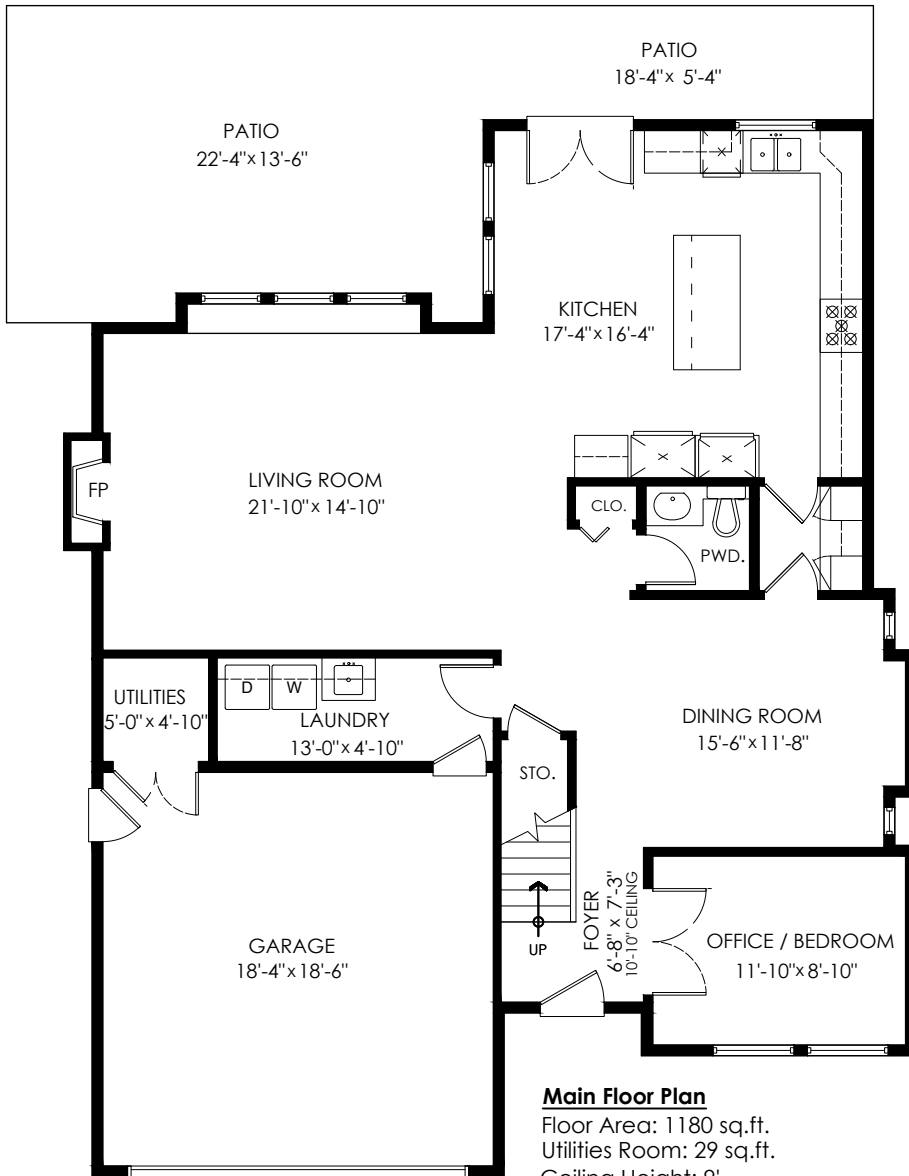
# 5375 Wellburn Drive Delta, BC

Main Floor: 1,180 sq.ft.  
Upper Floor: 1,074 sq.ft.  
**Sub Total: 2,254 sq.ft.**

Utilities Room: 29 sq.ft.  
**Total: 2,283 sq.ft.**

Garage: 361 sq.ft.  
Patio: 431 sq.ft.  
**Total Extras: 792 sq.ft.**

Open To Below: 27 sq.ft.



Measuring, Design & Permits | 604-876-3738